

GO DISABLED TOILET DOOR

As part of the Go Doors range of assistive technology solutions, the **Go Disabled Toilet Door** provides automated assisted entry into toilets for the physically impaired.

The **Go Disabled Toilet Door** system utilizes our premium Swiss made automatic door openers, combined with our **Go Disabled Toilet Door Button Set** installed to the entrance and the inside of the toilet, and can be utilized for both automatic swing and sliding doors configurations.

DESIGN

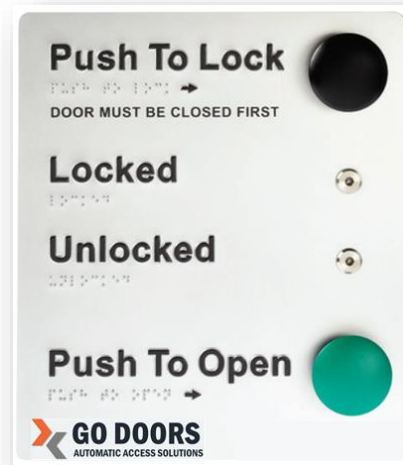
- Button plate sets are designed in accordance with Building Code of Australia, NCC Access for people with disability, NCC braille and tactile signs, and AS5007-2007 power doors
- Button plates are constructed of durable commercial aluminum which is chemical, UV and vandal resistant
- Plates include braille and tactile signage for vision impaired
- Plates can be recessed or wall mounted

FUNCTION

- External staff emergency override function
- Duress alarm for patrons in distress
- Flexible system can be utilized in both automatic swing and sliding entry configurations
- Simple to use for both UAT, amenities and parent rooms
- BMS, fire and security interface capability
- MLAK key option

Go Disabled Toilet Door Button Set

Internal Button Plate



External Button Plate



OPERATION

The **Go Disabled Toilet Door Button Set** is intuitive and easy to use:

- The user pushes the “Push to Open” button on the external button set, triggering the door to open automatically open, thus allowing the user to enter unimpeded. The door then closes behind the user after a predetermined hold-open time.
- Once inside, the occupant locks the door through an anti pass back “Push to Lock” button, which can only be locked from the inside. The locked door cannot be opened from the outside, and shows toilet as being occupied by an illuminated light on the outside button set.
- By operating the interior pad switch ‘Push to Open’ the door will immediately open.
- In the case of a power failure, the battery backup unit will drive the door open, or the door can be manually opened by pushing or pulling it open.
- In an emergency the door can also be manually opened from outside using either a security key, MLAK key, or emergency override button sequence.

WHY
CHOOSE
US



PROUDLY WA
OWNED & OPERATED



EXPERTS IN DISABLED
ACCESS SOLUTIONS



SWISS MADE QUALITY AND
RELIABILITY



REGISTERED NDIS
PROVIDER

GO DISABLED TOILET DOOR SYSTEM

SWING DOOR CONFIGURATION

With the increased awareness around the importance of automated access solutions for the disabled, fully automated disabled toilets have become a standard feature in many new and recently renovated premises.

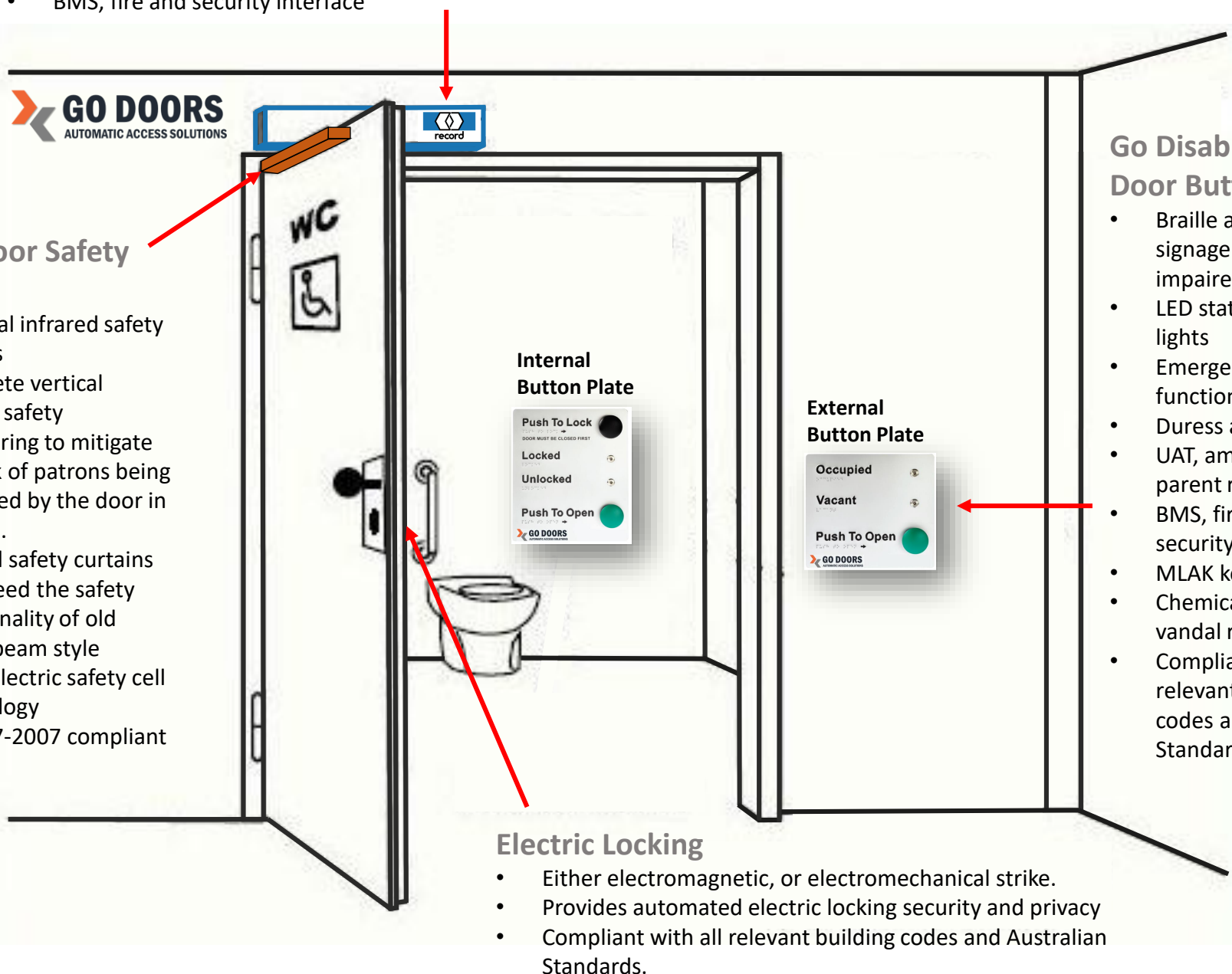
Automated access also benefits parents of young children in prams; people with temporary illness or injury; older Australians; delivery people and shoppers with heavy bags or trolleys. Improving access also helps businesses and service providers to meet existing legal responsibilities under discrimination law.

The **Go Disabled Toilet Door** in sliding configuration utilizes our premium Record STA21 automatic sliding door operator, in conjunction with our **Go Disabled Toilet Door Button Set** to provide effortless entry and exit from toilets. We can also configure the door to be opened via wireless remote controls or RFID proximity tags.

The **Go Disabled Toilet Door Button Set** has press button outside the door to open it and press button controls inside the door to lock, unlock and open the door. The attendant is also able to operate the door controls, or activate the emergency override breakout feature in case of emergency.

RECORD DFA127 Automatic Swing Door Operator

- Swiss made reliability & quality
- Built for high traffic commercial applications, with mechanical gearing to accommodate doors up to 350kg
- Reinforced, vandal resistant swing door arm and gearbox
- In-built battery backup (UPS) for 600 opening cycles
- BMS, fire and security interface
- Fully programmable anti-shock dynamic safety reverse/stop braking with delay, for safety of patrons in case of obstruction during either opening or closing cycle.
- Silent operation
- AS5007-2007 compliant



Swing Door Safety Sensor

- Optional infrared safety sensors
- Complete vertical curtain safety monitoring to mitigate the risk of patrons being impacted by the door in motion.
- Vertical safety curtains far exceed the safety functionality of old single beam style photoelectric safety cell technology
- AS5007-2007 compliant

Go Disabled Toilet Door Button Set

- Braille and tactile signage for vision impaired
- LED status indicator lights
- Emergency override function
- Duress alarm
- UAT, amenities and parent rooms
- BMS, fire and security interface
- MLAK key option
- Chemical, UV and vandal resistant
- Compliant with all relevant building codes and Australian Standards.

Electric Locking

- Either electromagnetic, or electromechanical strike.
- Provides automated electric locking security and privacy
- Compliant with all relevant building codes and Australian Standards.

GO DISABLED TOILET DOOR SYSTEM

SLIDING DOOR CONFIGURATION

With the increased awareness around the importance of automated access solutions for the disabled, fully automated disabled toilets have become a standard feature in many new and recently renovated premises.

Automated access also benefits parents of young children in prams; people with temporary illness or injury; older Australians; delivery people and shoppers with heavy bags or trolleys. Improving access also helps businesses and service providers to meet existing legal responsibilities under discrimination law.

The **Go Disabled Toilet Door** in sliding configuration utilizes our premium Record STA21 automatic sliding door operator, in conjunction with our **Go Disabled Toilet Door Button Set** to provide effortless entry and exit from toilets. We can also configure the door to be opened via wireless remote controls or RFID proximity tags.

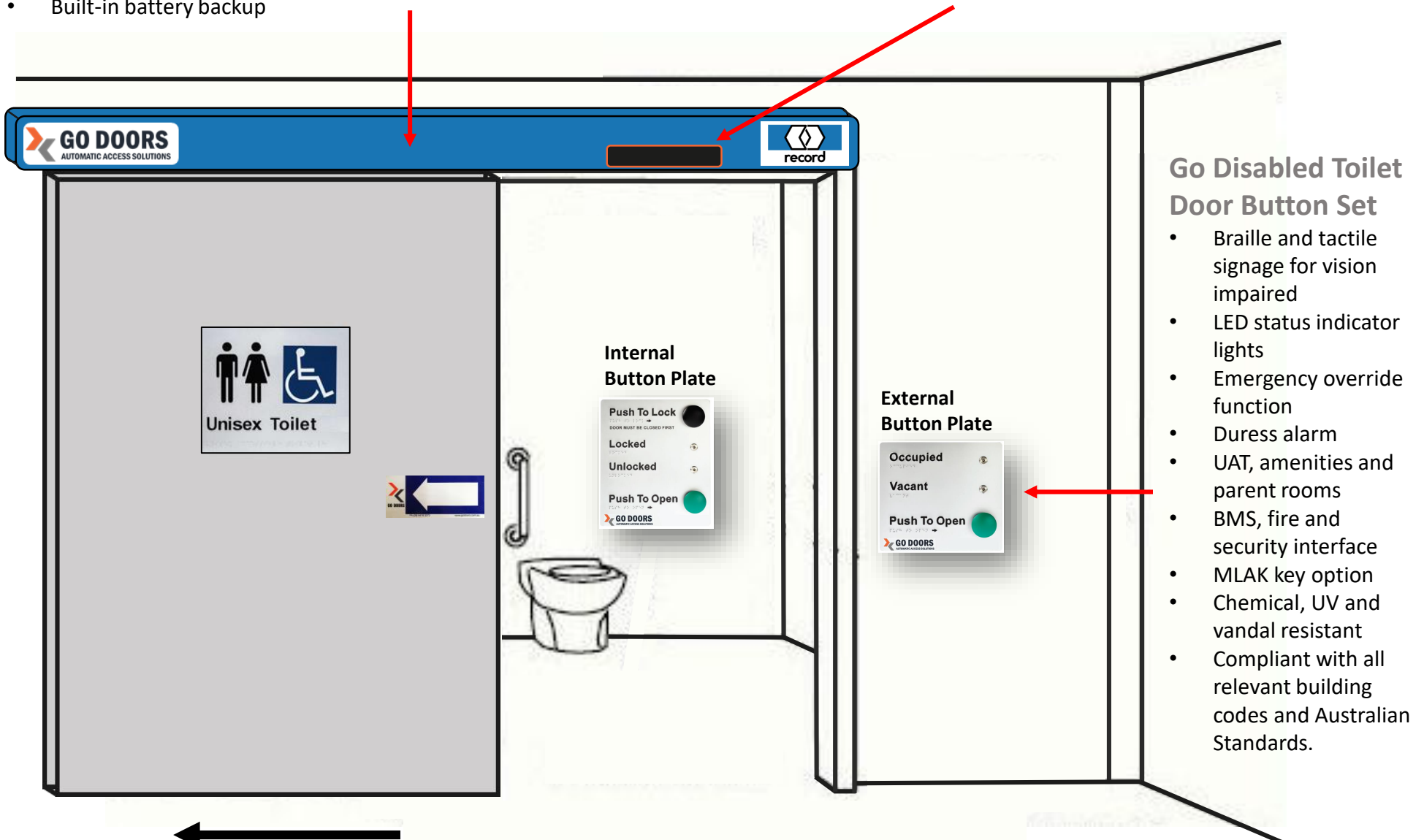
The **Go Disabled Toilet Door Button Set** has press button outside the door to open it and press button controls inside the door to lock, unlock and open the door. The attendant is also able to operate the door controls, or activate the emergency override breakout feature in case of emergency.

RECORD STA21 Automatic Sliding Door Operator

- Swiss made reliability & quality
- Slim line 108mm fascia / pelmet cover
- Built for high traffic commercial applications
- Strong mechanical gearing to accommodate doors up to 200kg
- Built-in failsafe electric door locking
- Built-in battery backup
- BMS, fire and security interface
- Fully programmable anti-shock dynamic safety reverse/stop braking with delay, for safety of patrons in case of obstruction during either opening or closing cycle.
- Silent operation
- AS5007-2007 compliant

Sliding Door Safety Sensor

- Complete vertical curtain safety monitoring to mitigate the risk of patrons being impacted by the door in motion.
- Vertical safety curtains far exceed the safety functionality of old single beam style photoelectric safety cell technology
- AS5007-2007 compliant



Go Disabled Toilet Door Button Set

- Braille and tactile signage for vision impaired
- LED status indicator lights
- Emergency override function
- Duress alarm
- UAT, amenities and parent rooms
- BMS, fire and security interface
- MLAK key option
- Chemical, UV and vandal resistant
- Compliant with all relevant building codes and Australian Standards.